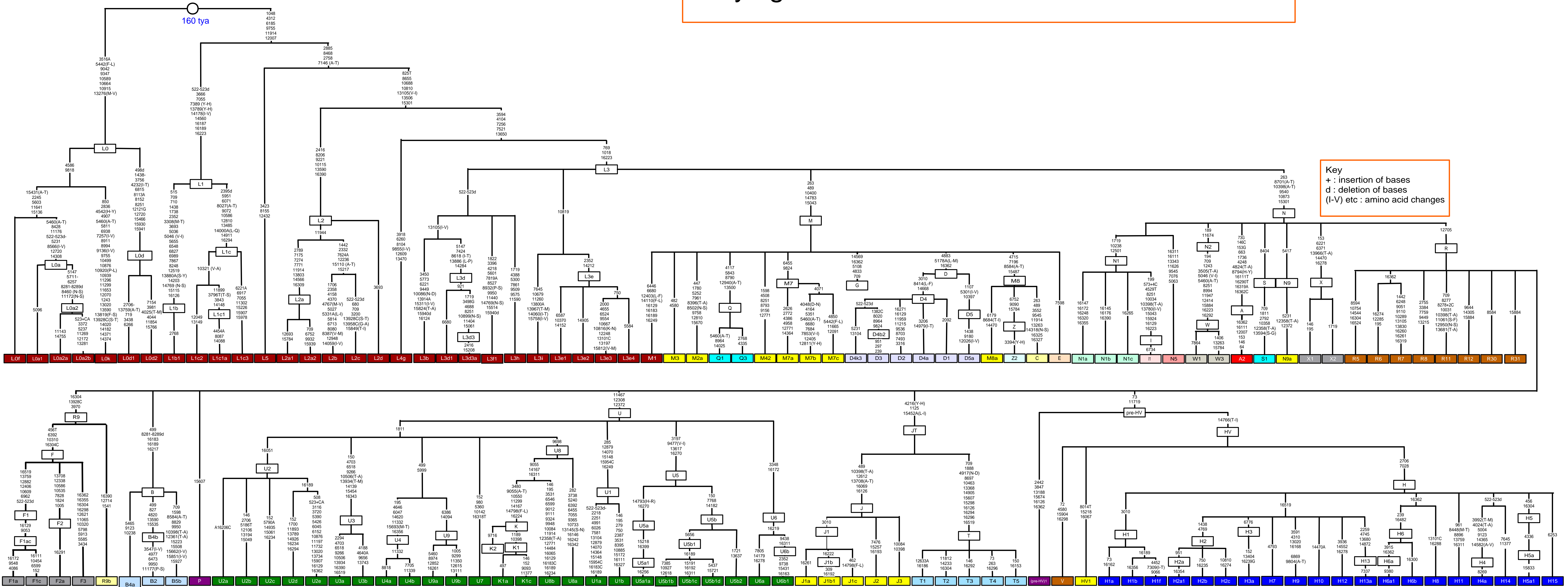


Phylogenetic Tree of Global Mitochondrial DNA

"Mitochondrial Eve"

160 tya

Key
 + : insertion of bases
 - : deletion of bases
 (-V) etc : amino acid changes



* John Doe's Haplogroup

Every person alive today can trace their maternal lineage to a single woman who lived in Africa approximately 160,000 years ago. As our ancestors migrated out of Africa and settled in Europe, Asia and the Americas, mutations occurred that became part of the genetic make-up of particular geographical populations. This diagram depicts how these mutations led to branching in the phylogenetic tree of mtDNA.

Customers of Argus Biosciences receive a customized copy of the tree highlighting their haplogroup.
 (You can zoom in on the PDF version without losing resolution using Adobe Acrobat Reader).

